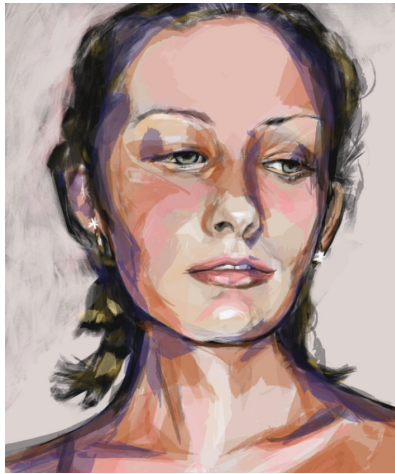
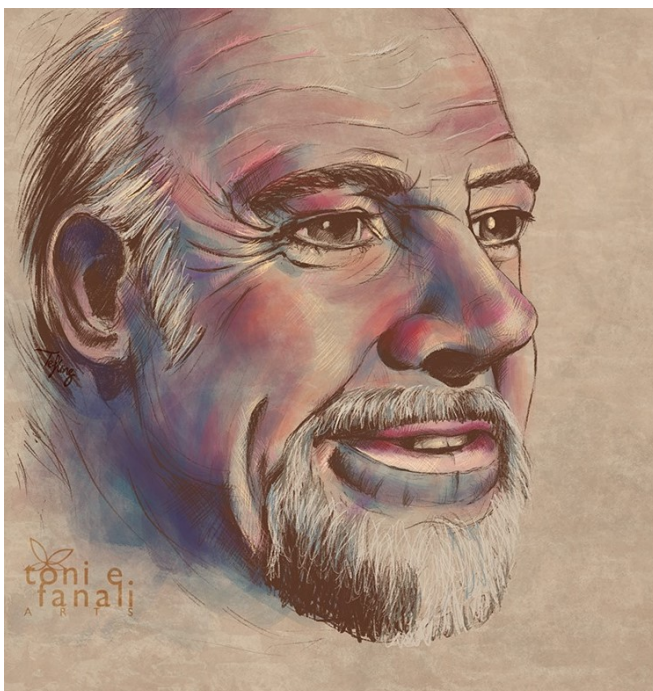


ASA Portrait Club

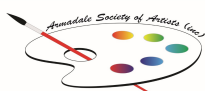


Come and hang out with Toni Fanali and Chantalle Grummet and have a go at drawing portraits. We will have tutorials and cover a variety of portrait subjects and techniques, something different each week. It's about sharing tips and advice with each other while having fun drawing portraits.

At the **Greendale Centre** from **2:30 till 4pm** every second Friday. Starting February 5th.



CONTACT CHANTALLE GRUMMET: 0422 541 738



**Armadale Society
of Artists**

SOME OF THE TOPICS COVERED IN THE PORTRAIT CLUB

- Contour Mapping
- Pet Portraits
- Light and shadow only studies
- Feature Focus ~ eyes, nose, mouth
- Ballpoint pen continuous lines
- Real Hair
- Planes of the face
- Muscle anatomy
- Simplification
- Tonal values on the face
- Faces from the imagination
- Material explorations